

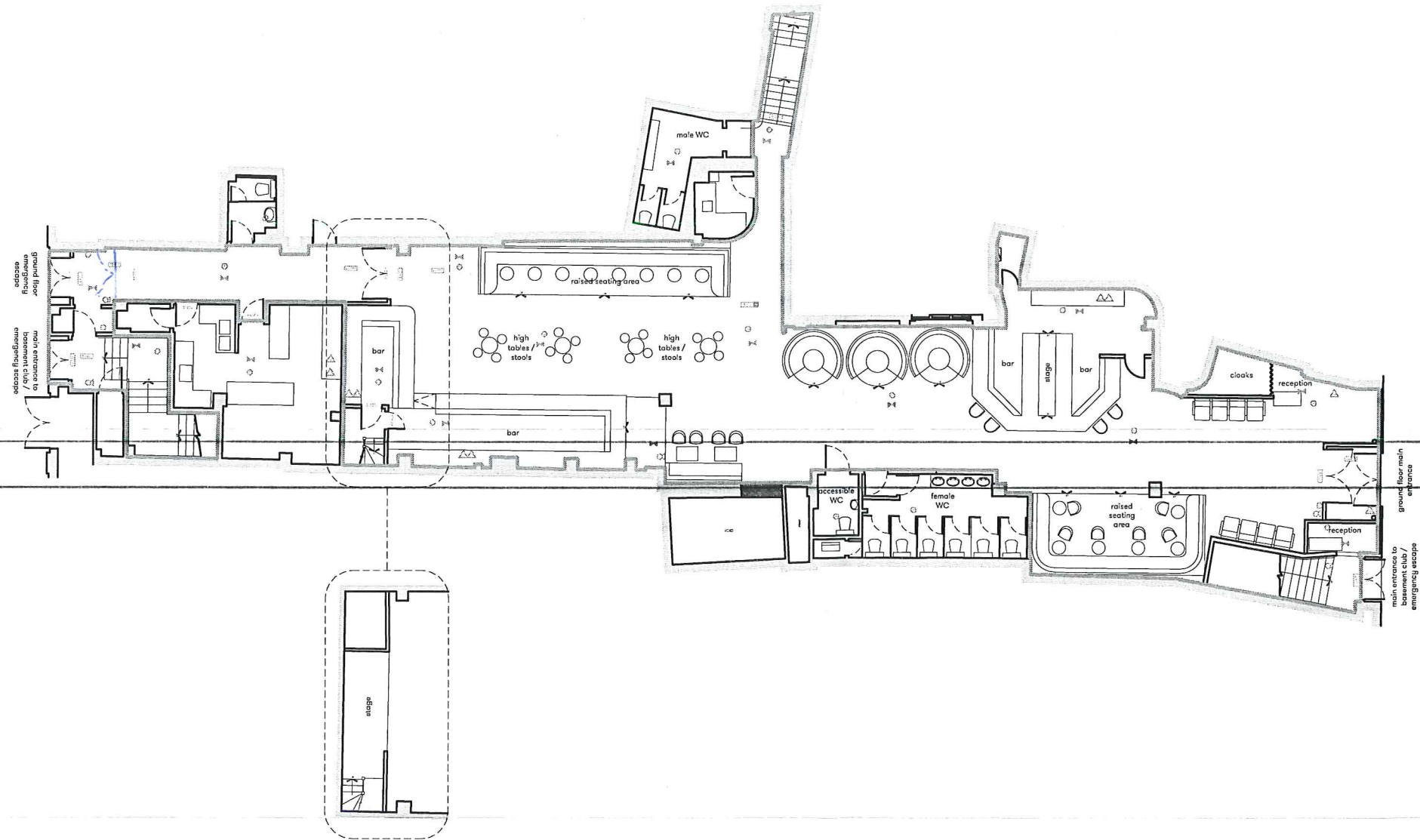
All drawings are for design intent only. It is the contractor's responsibility to check the dimensions, suitability of specifications and compliance with statutory regulations. Sculpt Design Ltd retain the copyright for this drawing which must not be copied, duplicated or distributed without prior written consent. Do not scale from drawing, if in doubt ask!

LEGEND

- area where licensable activities will take place
- FD00 fire door type
- push bar on door
- FD01 door sign - fire door keep shut
- FD02 door sign - fire door keep locked / fail safe digital control
- ES01 sign - fire escape keep clear
- ES02 illuminated escape sign
- ES03 illuminated escape sign with arrow
- ASD automatic smoke detector
- AHD automatic heat detector
- CAHD combined automatic heat and smoke detector
- AWD audible warning device
- FACP fire alarm call point
- FE1 fire extinguisher - dry powder
- FE2 fire extinguisher - carbon dioxide
- FE3 fire extinguisher - water
- FE4 fire extinguisher - multi purpose
- FB fire blanket
- EL area covered by emergency lighting

GENERAL NOTES

Consumption of alcohol and licensable activities take place anywhere within the premises
 In the event of fire alarm activation the AV equipment will automatically turn off
 Loose furniture shown indicatively
 All emergency escape alarms, equipment and lighting to conform to current regulations



1 Licensing Plan - Ground Floor
 1:200 @ A3

Rev	Date	Comments
D	05.01.2018	FOR LICENSING
C	05.01.2018	FOR LICENSING
B	05.01.2018	FOR LICENSING
A	21.12.2017	FOR LICENSING

Client
 Project Title Bonbonniere Club
 Project Number SC17026

Project Address
 201 Wardour Street, Soho, London, W1F 8ZH

Drawing Title
 Licensing Plan
 Ground Floor

Drawing Number M(1)02
 Revision D

SCULPT

sculpt.design - 0121 663 1313 - hello@sculpt.design